

Lowenstein prisma APP

User Guide



Vivisol Website

Lowenstein prisma APP

prisma APP gives you meaningful information about your therapy along with personalised tips and recommendations. You can set your own therapy goals and receive information about your therapy progress. You can also open a therapy journal and generate personal reports. With prisma APP you can control your device remotely and adjust comfort settings of your device just from the bedside. Finally, the prisma APP lets you transmit your data as needed to your doctor or device dealer.

At Vivisol we would really appreciate if you could download the app and confirm permissions to 'share health information with your provider' this will ensure we can support you even if there are connectivity issues, as we will always be able to view your results.

User Guide

Please see the following pages which are a step-by-step guide to how to download the app, connect to your device and share your data.

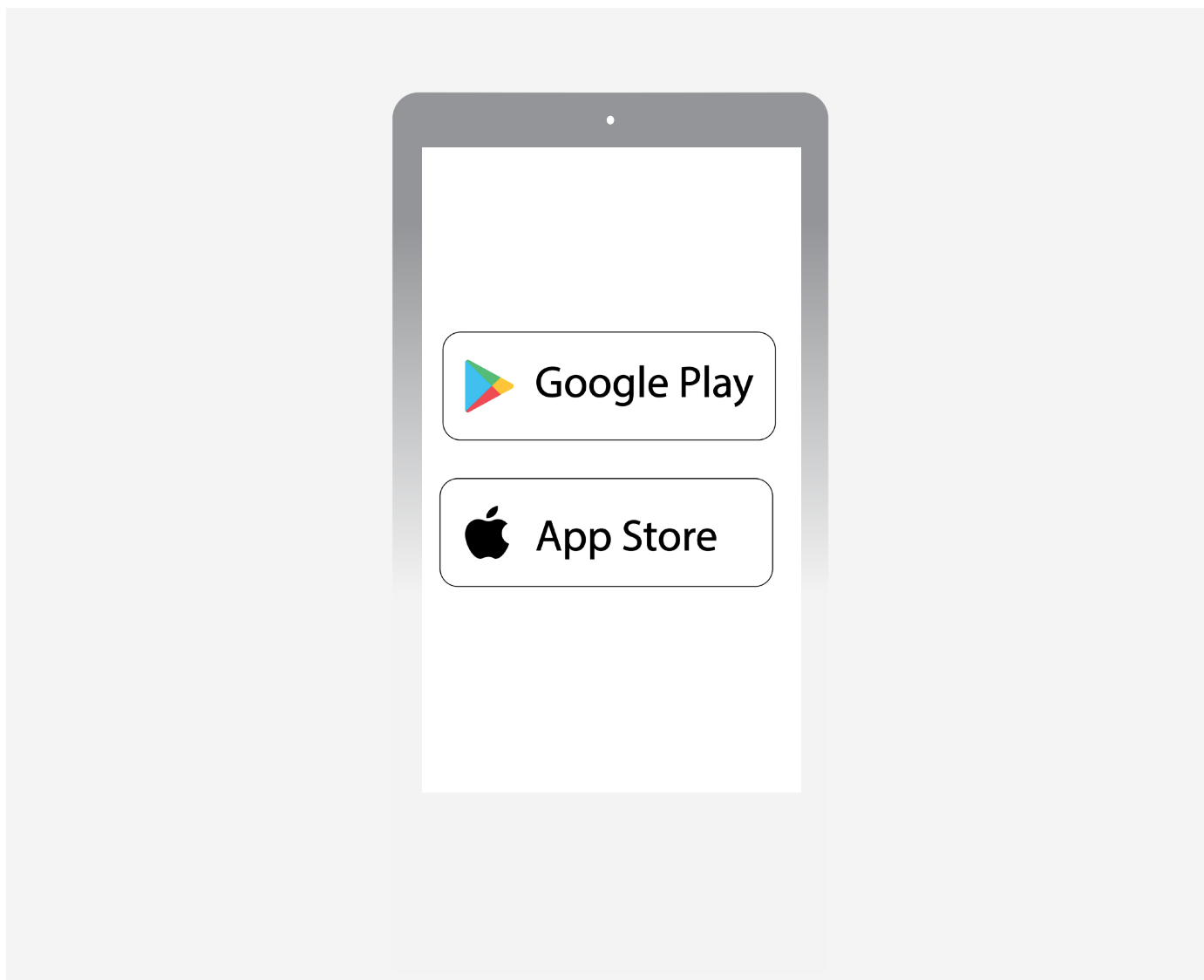
Lowenstein prisma APP

User guide

Download the prisma app.

prisma APP on the App Store (apple.com).

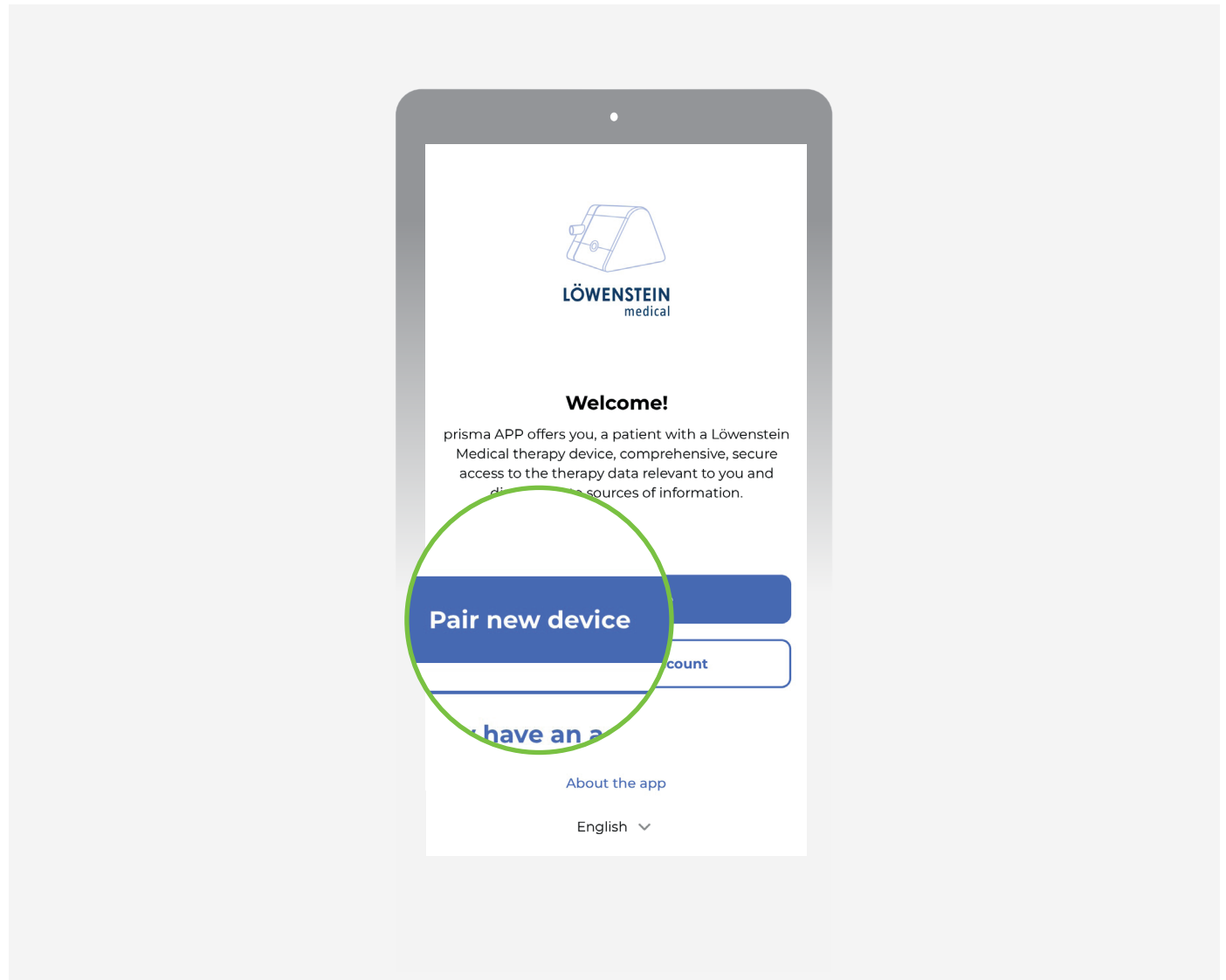
prisma APP - Apps on [Google Play](https://play.google.com).



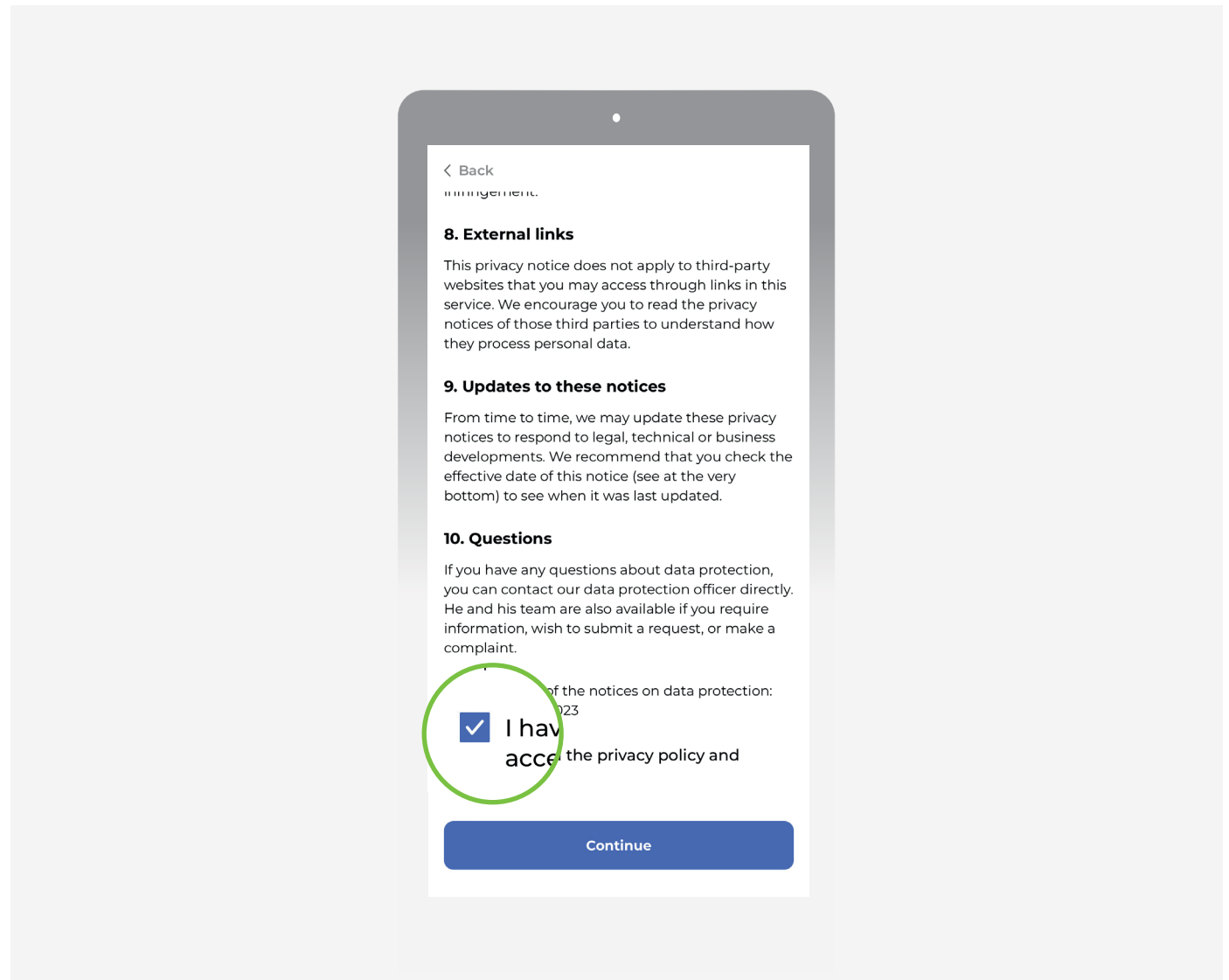
Lowenstein prisma APP

User guide

Click 'Pair new device'.



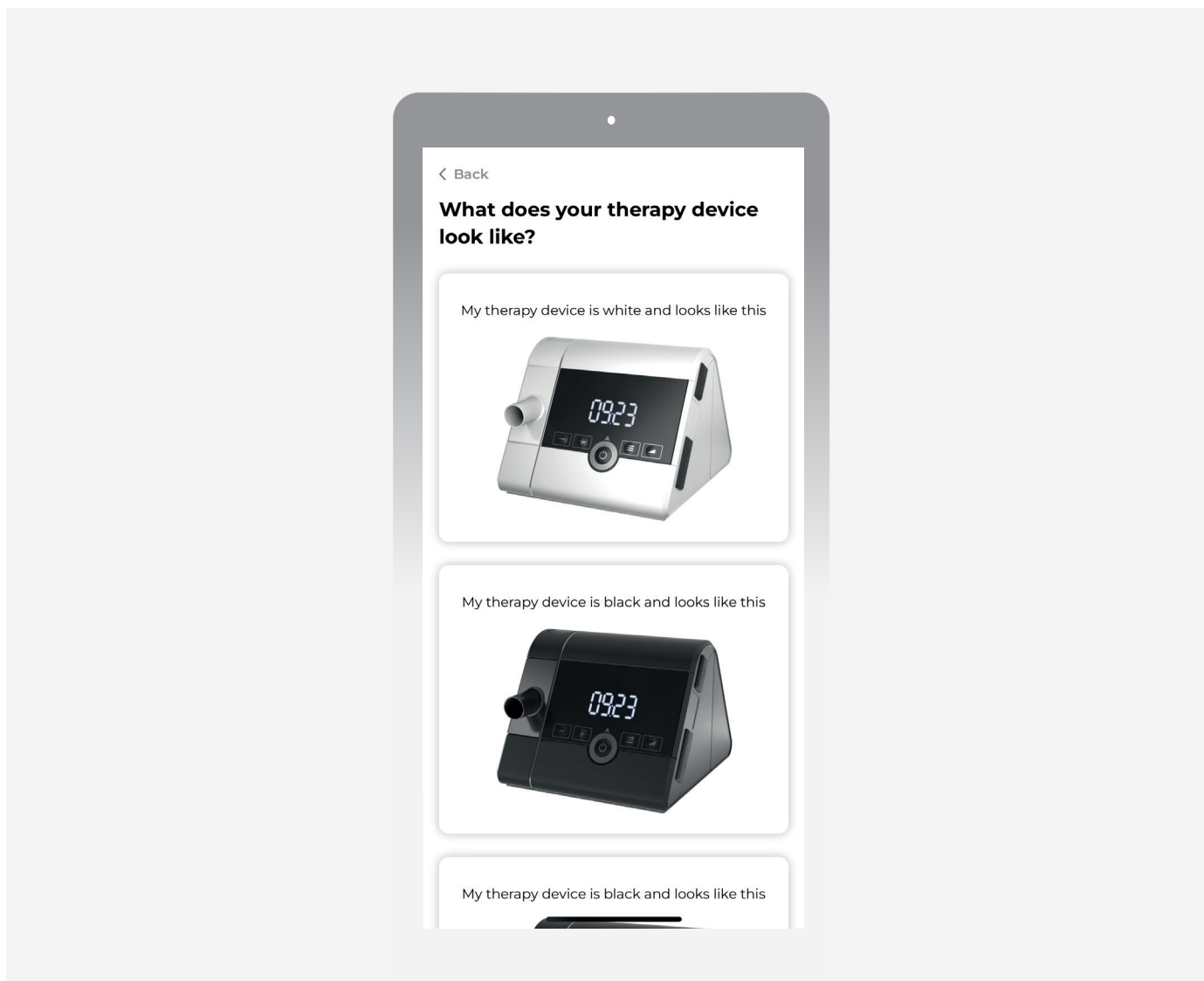
Read and accept the Privacy Policy.



Lowenstein prisma APP

User guide

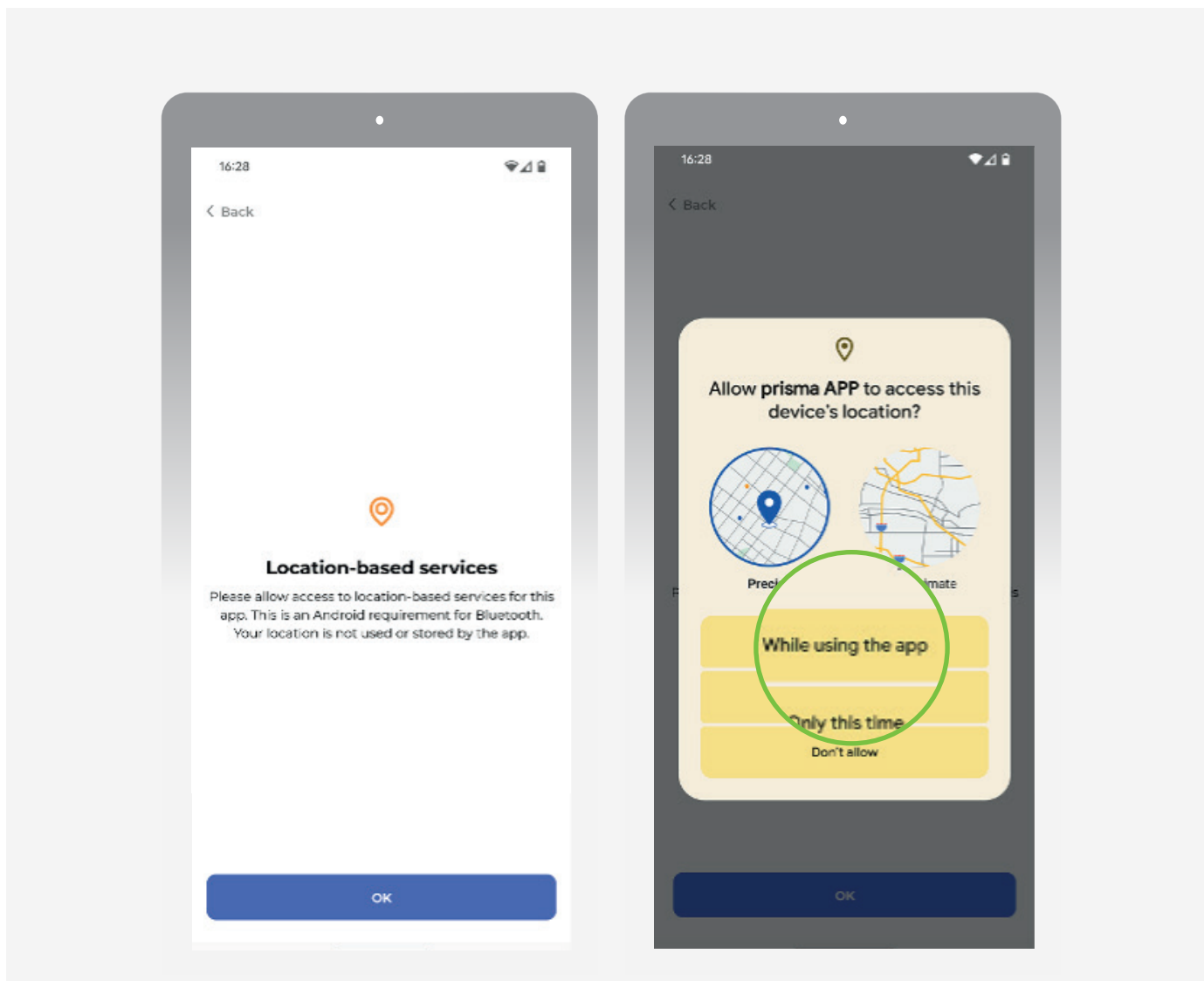
Select which therapy device you are using.



Lowenstein prisma APP

User guide

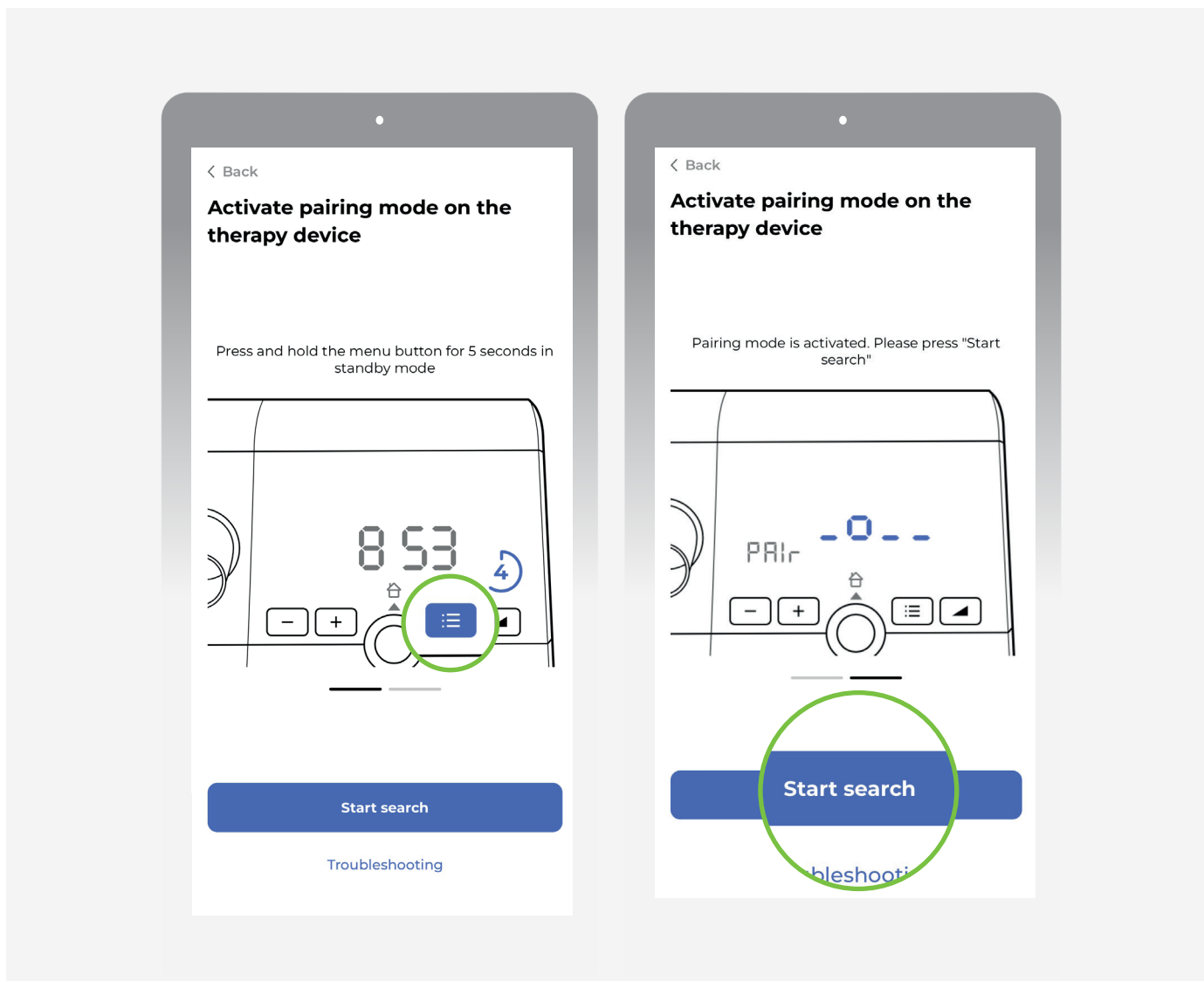
Set up the location services and allow the app to use location whilst using the app.



Lowenstein prisma APP

User guide

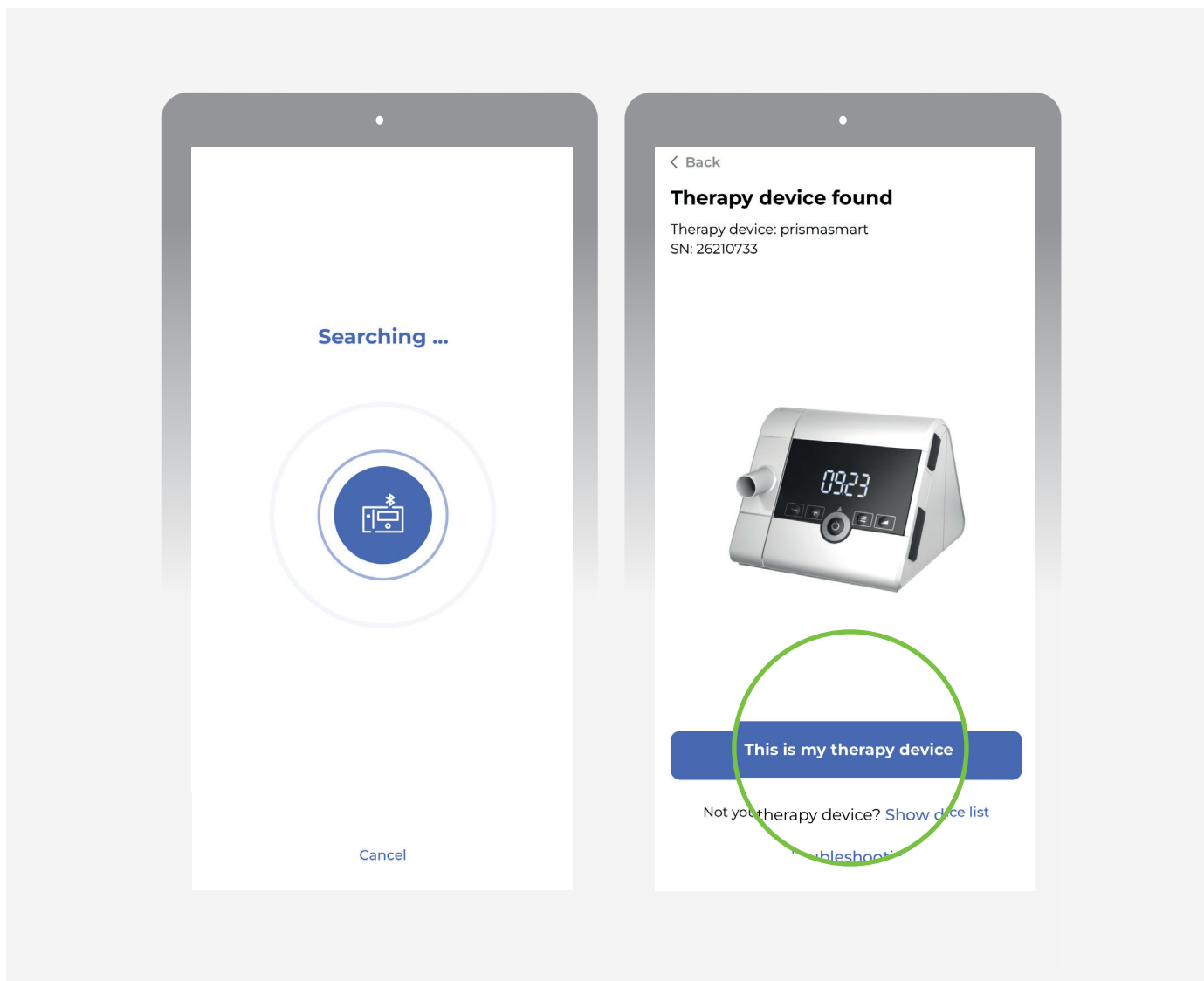
To pair your device, press and hold the menu button (refer to picture), and press 'Start search'.



Lowenstein prisma APP

User guide

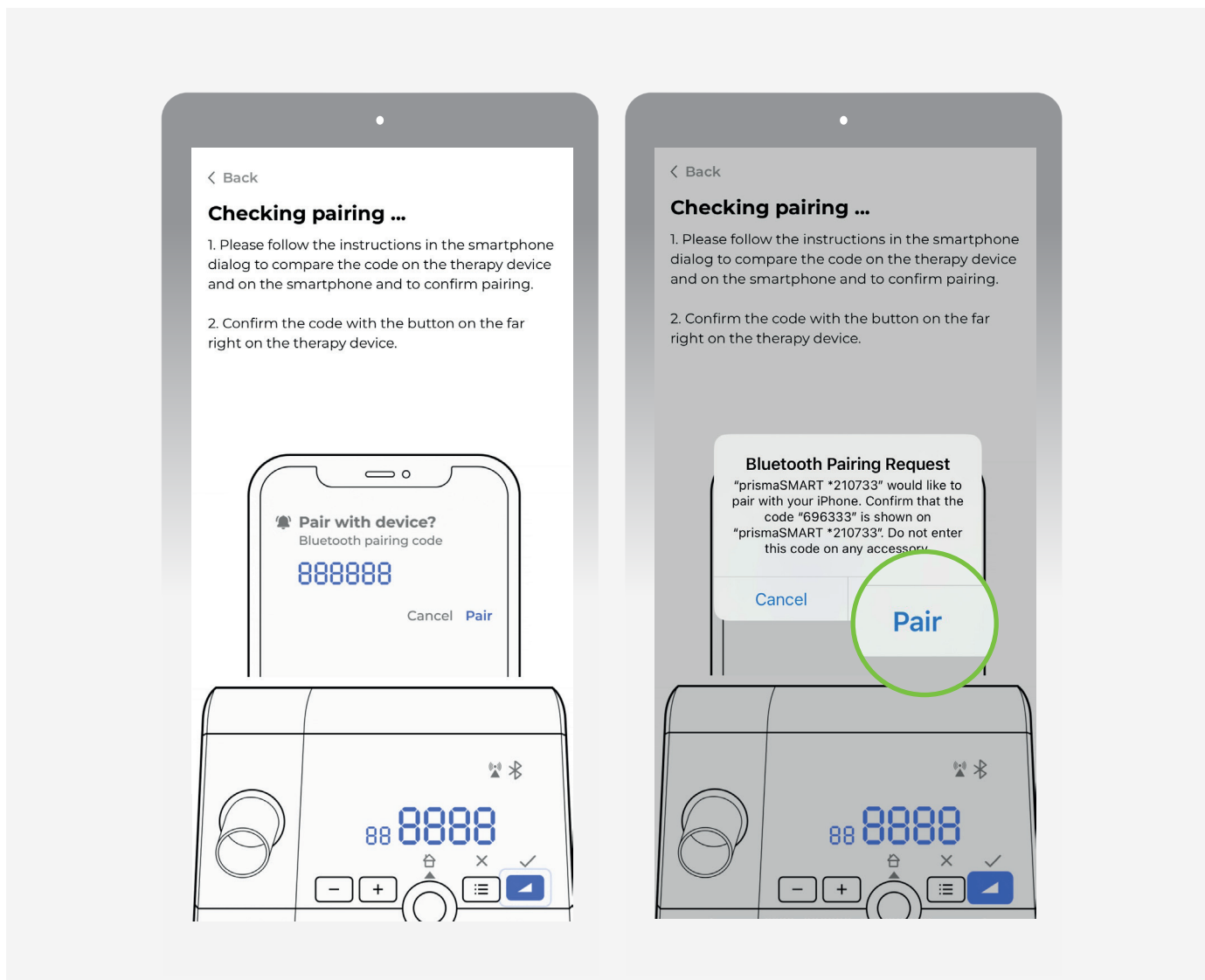
The app will start to search for your device. Once it locates a device, it will show the device on screen. Please check the serial number of the device found against the serial number on the right hand side of your device to ensure they match. If this is your device, click 'This is my therapy device'.



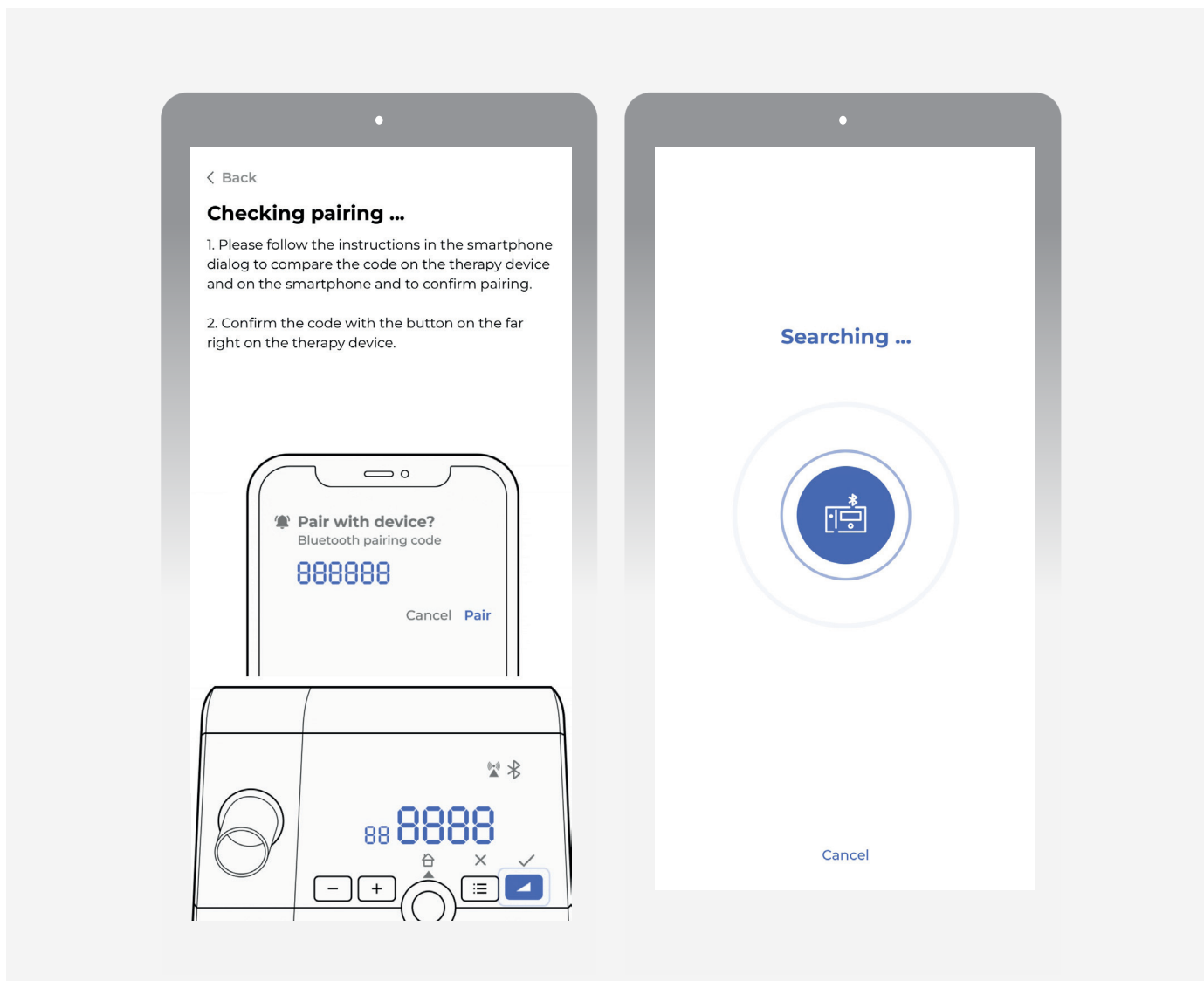
Lowenstein prisma APP

User guide

Follow the on screen instructions to pair the device, checking the pairing codes are the same. Click the tick box to allow access to your contact and call history, then click 'Pair'.



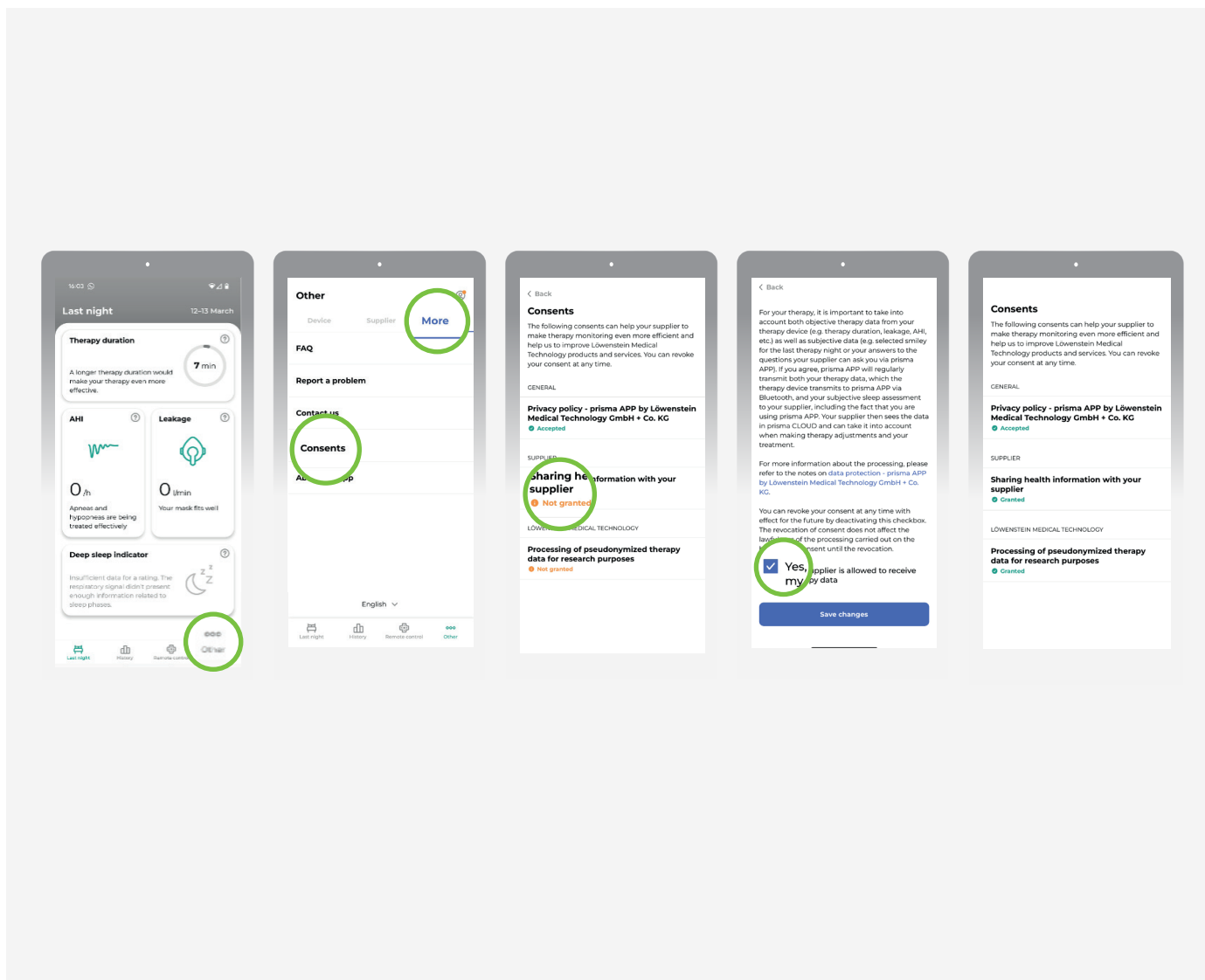
This will then pair the device.



Lowenstein prisma APP

User guide

Once paired, click 'Other', and then click 'More' and then 'Consents' to allow the app permissions and consent to share data with your clinic and support team. Please see the following settings:



Thank you.

If you have any questions or issues with the website,
please contact 0800 121 4012.